



# DON'T PUT RECYCLING IN PLASTIC BAGS

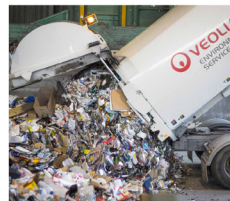
## DID YOU KNOW?

All recycling  
must be placed  
in the recycling  
bin loose - not  
in plastic bags,  
boxes or tied up  
with string.



# What happens to Kerbside Recycling

- 1** Putting recyclables into your kerbside bin is the beginning of an important journey to convert them into new products and materials.
- 2** Recycling is collected by truck and transported to a Materials Recovery Facility (MRF).
- 3** The recyclables are loaded onto a conveyor belt.
- 4** The conveyor belt takes the recyclables to the sorting bays where they are manually separated into glass, plastic, paper, cardboard, steel and aluminium by staff.



Printed Sept 2019

For more information  
about the kerbside recycling  
assessment visit:  
[www.rethinkwaste.com.au](http://www.rethinkwaste.com.au)

**Reth!nk Waste**  
TASMANIA

# All you need to know about YOUR KERBSIDE RECYCLING



Do the right thing, only  
put suitable items in  
your recycling bin!

## Be a good SORT!

cradle coast  
waste services  
Operated by Duvalston Waste Management

**NORTHERN TASMANIAN**  
Waste Management

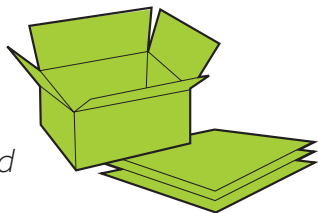
[www.rethinkwaste.com.au](http://www.rethinkwaste.com.au)

## What **CAN** go into your kerbside recycling bin...



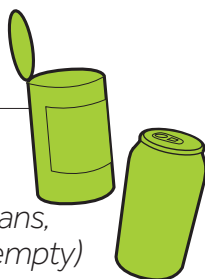
### Paper and cardboard

Office paper, cardboard, letters and envelopes, junk mail, telephone books, pizza boxes (clean), newspaper, magazines, pamphlets and paper bags



### Metal cans

Aluminium, steel and tin-plated cans, aluminium foil (clean), paint tins (empty) and aerosol cans.



### Glass

Bottles and jars (remove lids).



### Hard plastic containers

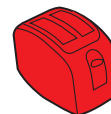
Please empty and remove caps.



## What should **NEVER** go into your kerbside recycling bin...



- ✗ Batteries
- ✗ Bubble wrap
- ✗ Building materials
- ✗ Carpet
- ✗ Clothing
- ✗ Computers & TVs
- ✗ Coat hangers
- ✗ Crockery
- ✗ Electrical appliances
- ✗ Food scraps
- ✗ Furniture
- ✗ Garden waste
- ✗ Garden hose
- ✗ Gas bottles
- ✗ Medical items
- ✗ Nappies
- ✗ Polystyrene
- ✗ Plastic bags
- ✗ Paint cans (full / partially full)
- ✗ Plastic toys
- ✗ Saucepans, pots & pans
- ✗ Shredded paper
- ✗ Soft plastic
- ✗ Shoes & handbags
- ✗ Syringes
- ✗ Tetra Packs
- ✗ Waxed Cardboard (Coffee Cups)
- ✗ Wheel caps



## Recycling tips

To recycle your plastic you need to know:

- Not all plastic packaging displays the recycling triangle (officially known as the Plastic Identification Code). This triangle tells you what plastic was used to make the packaging, not whether the packaging is recyclable.
- Plastic can be placed into two categories:

### 1. Hard Plastic

Any plastic that is rigid or holds its shape, for example shampoo bottles, can be recycled through your kerbside recycling bin.



### 2. Soft Plastic

Plastic that is flexible, for example, bread bags, bubble wrap and plastic bags, cannot be recycled in any Tasmanian kerbside recycling collection. Most major supermarkets now accept clean, flexible plastics for recycling. Some transfer stations accept soft plastic.

