

# FOGO FACTS # 4

WHO &  
HOW  
MUCH?

## THE FOGO SERVICE AREA

The FOGO service will be provided to all households within the Central Coast Council's current kerbside waste collection area.

Businesses can opt in to the FOGO service by contacting Council on 6429 8900.

Residents on the boundary of the kerbside collection area who have opted in for garbage and recycling collection services will also be provided with a FOGO bin and be included in FOGO collections.

## SERVICE FEES

The addition of this new service will add around \$1.15 per week to the total cost of your kerbside garbage, recycling and FOGO waste collection services.

As per previous years, your combined new waste services fee is included in your rates notice.

Your council rates and fees are used to fund many different community services; some you benefit from directly and others indirectly. It's a fair system in areas with smaller populations like ours because new services that are purely 'user pays' could not otherwise be afforded.

If you already have a home compost system, you'll appreciate that the more people composting either at home or via the Council FOGO service, the better it is for *everyone*. Composting reduces harmful greenhouse gases in our local landfill, helps our landfill to last longer, and it puts nutrients back into Tasmanian gardens and soils.

FOGO also provides a new, safe way to dispose of more items than in a standard home compost system including perennial weeds, meat, dairy foods and pet waste.

## COUNCIL AND COMMERCIAL FOGO SERVICES

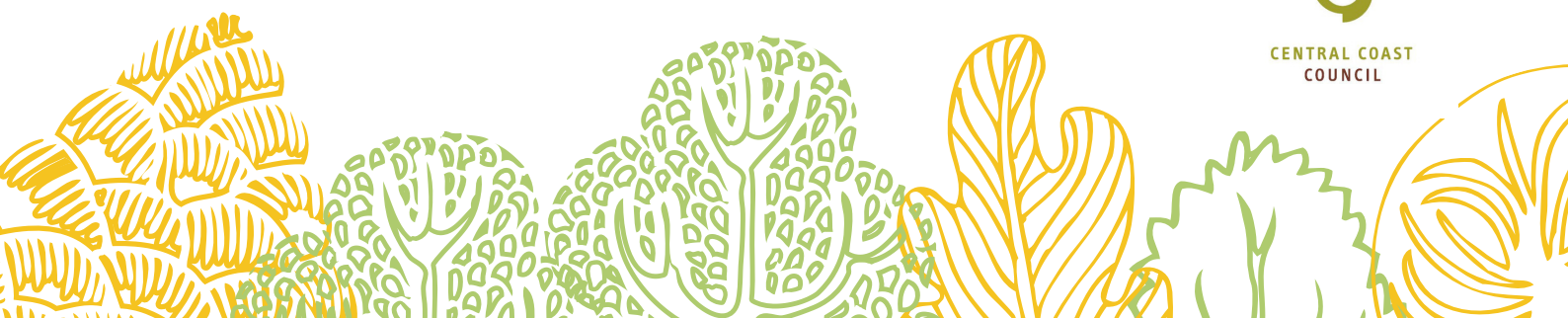
Your Council's FOGO service can complement other garden maintenance and waste removal services already operating in your local area.

Not all garden waste can be disposed in your FOGO bin.

*continued...*



CENTRAL COAST  
COUNCIL



Garden maintenance and removal services may still be required for:

- Tree stumps;
- Branches thicker than 20cm;
- Treated timber;
- Soil;
- Stones, gravel, bricks and concrete;
- Large loads of garden waste that cannot fit in your FOGO bin or that you do not want to store on your property until the next FOGO collection in a fortnight.

It may also be convenient for you to continue with a garden maintenance service and use the FOGO bin to dispose of suitable garden waste (and food waste too); helping you to cut down on waste transport costs.

For more information on our FOGO service, contact Council on 6429 8900.

