

FOGO FACTS # 6

HOW
TO FOGO?
PART 2

FOGO, GARBAGE AND RECYCLING

When the fortnightly FOGO collection starts, your weekly garbage collection will also change to a fortnightly service (one week the FOGO bin is collected, the next week the garbage bin is collected etc).

The yellow-lidded recycling bin will continue to be collected fortnightly as per today. You'll receive a collection calendar with your FOGO information pack when your green-lidded FOGO bin is delivered to your property so you'll know which bin to put out each week.

If you miss a collection, or your FOGO bin is stolen or damaged, contact Council. These issues will be handled the same way as for garbage and recycling kerbside collections.

MANAGING YOUR GARBAGE AFTER FOGO

By disposing food scraps and garden waste in the FOGO bin, more space will be available in your kerbside garbage bin.

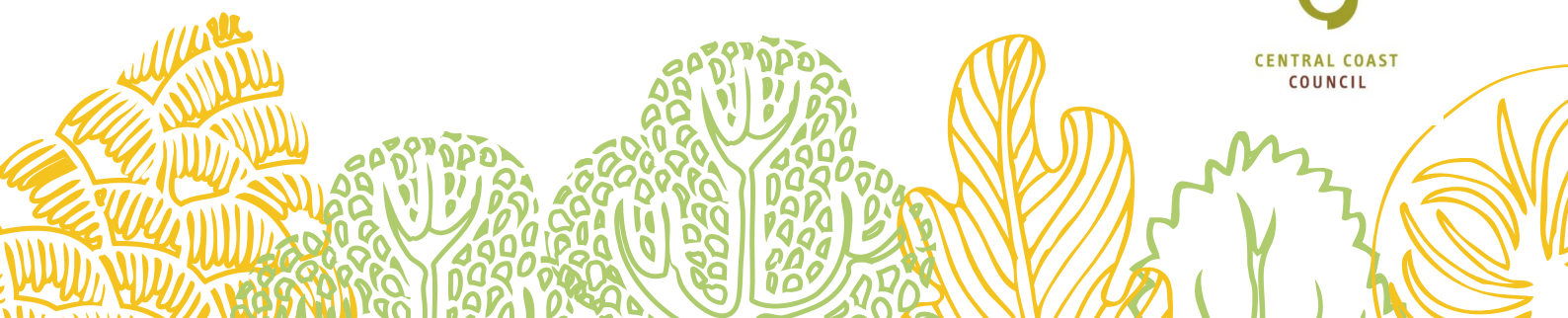
If your garbage bin is often full, take a look at what's inside and consider these options:

- Soft plastics including carry bags, biscuit wrappers, cereal bag liners, bread bags, foil chip packets and many others can be recycled **free** in the RedCycle bins at all Coles and Woolworths supermarkets (drop them off whenever you shop).
- Plastic bottles, plastic containers, tin cans, aluminium cans, empty aerosol cans, glass bottles and jars, paper and cardboard can go in your kerbside recycling bin.
- Paint tins, light globes, fluoro tubes, batteries and electronic waste can be taken to the Resource Recovery Centre for **free** recycling.
- Toys, clothing and bedding can be donated to charities for resale. Some charities also collect worn textiles to cut up and sell as rags.
- When shopping, choose products with less packaging. Avoiding waste in the first place is one of the simplest ways to keep your garbage bin from overflowing.

continued...



CENTRAL COAST
COUNCIL



If you have too much waste to fit in your garbage, FOGO or recycling bin you have the option to remove some waste and wait until the next collection.

You can also bring the excess waste to the Resource Recovery Centre (recycling is free to drop off) or arrange for a commercial service to take it away.

Every household is different. To find ways to reduce your household's waste follow Rethink Waste Tasmania on Facebook, visit www.rethinkwaste.com.au or call Council for advice.

For more information on our FOGO service, contact Council on 6429 8900.



CENTRAL COAST
COUNCIL

