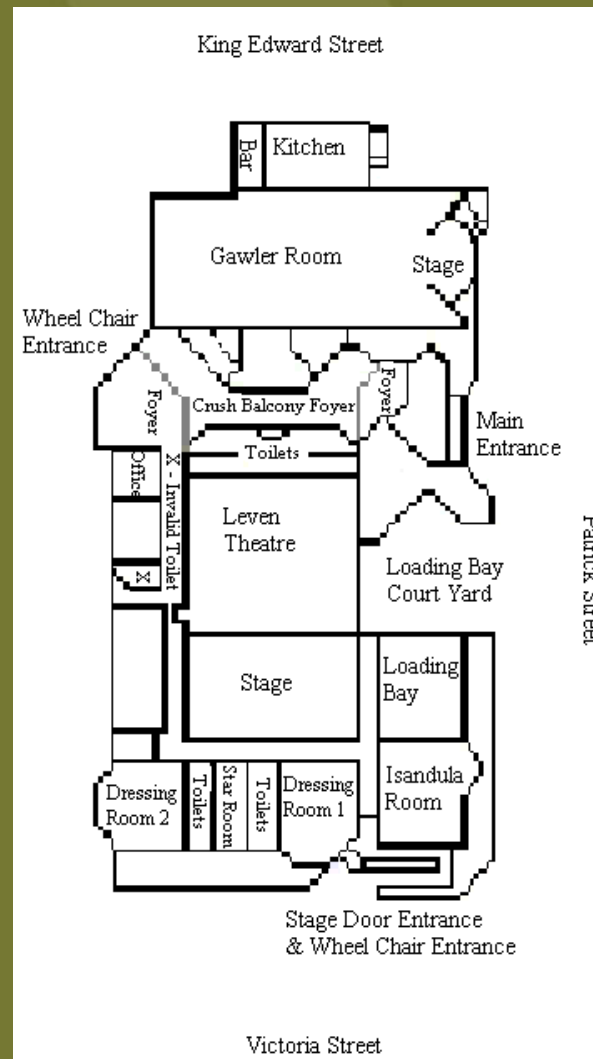
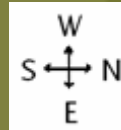


3 The Civic Centre

The Civic Centre incorporates a function room, a modern theatre and a meeting room.



-  All Day Parking
-  2 Hour Parking



Ulverstone Civic Centre

Issue: September 2010



PO Box 220 / DX 70506
 19 King Edward Street
 Ulverstone Tasmania 7315
 Tel 03 6429 8900
 Fax 03 6425 1224
admin@centralcoast.tas.gov.au
www.centralcoast.tas.gov.au

1 Location

Located in Patrick Street, within walking distance from the main shopping area, the Centre offers ample free parking conveniently close by and all on level ground.

2 Function and Meeting Facilities

Gawler Room

The Gawler Room is a large room with a small stage at one end. The Room seats 200 theatre or cabaret style. It can also be divided in two to cater for smaller functions. The room can be used for weddings, parties, conferences, seminars, meetings, theatre restaurant, auctions, cabaret, small plays, trade shows and art exhibitions. Tables and chairs are available for which the hirer is responsible for setting up and packing away. The room is also equipped with a small PA system.

Kitchen/Bar

The kitchen which adjoins the Gawler Room is equipped with cutlery, crockery, salt and pepper shakers, pots, boilers, urns, oven, microwave, food warmer, fridge and dishwasher. A bar area is also available, with glassware and glass washer.

Isandula Room

This is a small meeting room and is accessible from the stage entrance door at the rear of the building on the corner of Patrick and Victoria Streets.

The Room seats 40 theatre style or 20 cabaret style. There are tea and coffee facilities available. Tables and chairs are available for which the hirer is responsible for setting up and packing away. There is wheelchair access to the Isandula Room.

Leven Theatre

This room has tiered seating for 251. The room can be used for conferences, film or slide shows, seminars, meetings, auctions, plays, performances, concerts, band concerts, eisteddfods and variety shows.



This facility is coordinated by a qualified technician. Please contact us to further discuss your requirements.

There are male and female toilets and invalid toilets situated in the main foyer area. Wheelchair access to the Leven Theatre and Gawler Room is through the southern door (please refer to the map).

Dressing Rooms

There are three dressing rooms situated behind the stage – Male, Female and Star dressing rooms. The Male and Female dressing rooms are large in size, whereas the Star dressing room is small. All dressing rooms have toilet and shower facilities.

Features

Include lighting box, PA system, lecterns, special lighting in Theatre, loading dock in Theatre, crush balcony, kitchen facilities, bar facilities, ample free car parking space, situated in town centre, function room capable of division into two areas, TV, video, overhead projectors, whiteboards and microphones, slide projector, grand piano, two upright pianos, projection screens, display screens and theatre screen.

Telephone contact can be made direct to the Gawler Room, Leven Theatre and Isandula Room via the Council switchboard.

